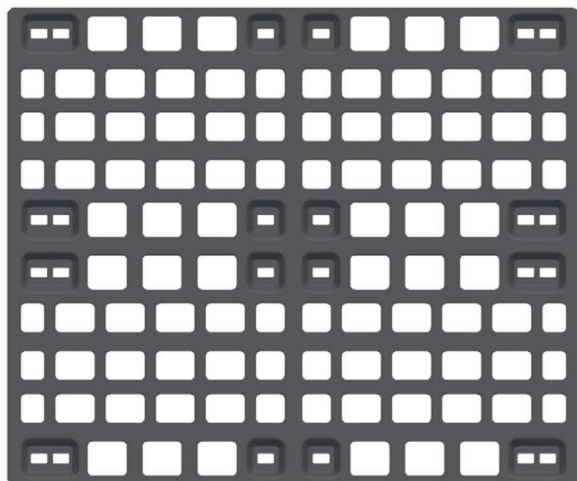


PULA-1210

ULTRALIGHT STACKABLE PALLET
1200 x 1000

- skids
- stackable
- openwork/-solid
- with / without rim

CHARACTERISTIC

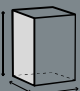


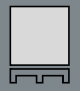
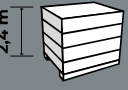



Ultra-light EURO openwork pallet with legs, very suitable for transporting and displaying goods with a low load capacity of up to 400 kg.

It is used in the food, pharmaceutical and other industries. It enables safe and easy transport and, thanks to its aesthetic design, an interesting display of goods. The lightweight and stable design of the pallets makes them easy to move from place to place.

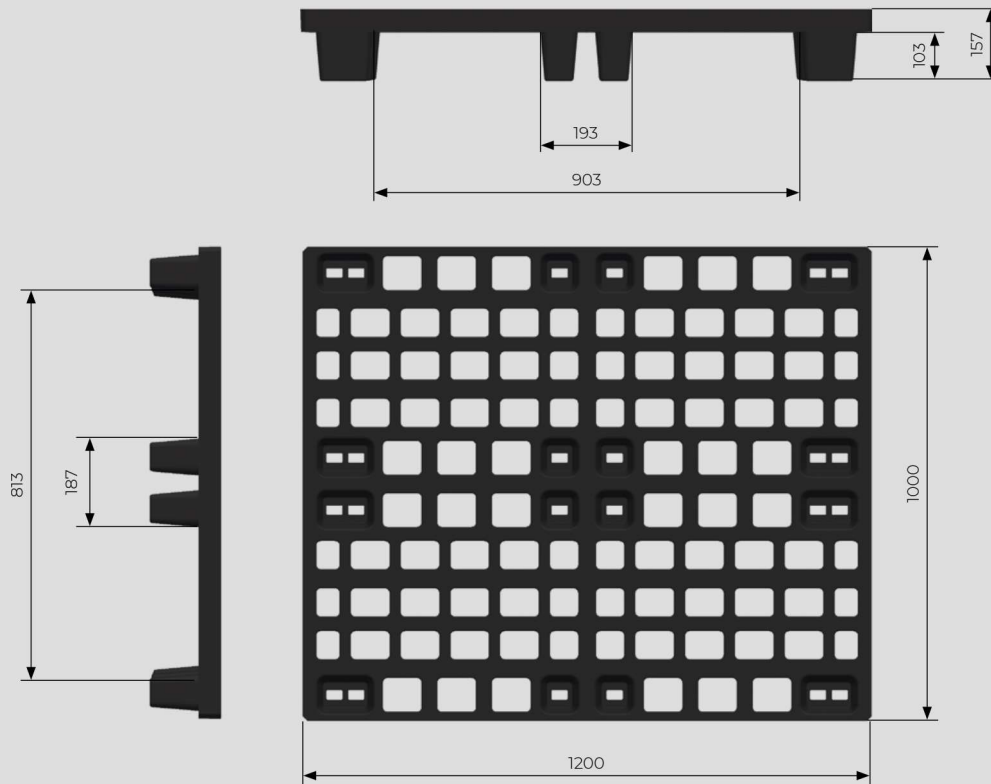
It is stackable, which reduces storage and transport costs.

Low-weight pallet approx. 6.6 kg, easy to clean and disinfect.

SPECIFICATION

| | | | |
|---|---|---|--|
|  | <p>dimensions</p> <p>1200 x 1000 x 157 mm</p> |  | <p>weight</p> <p>6,6 kg</p> |
|  | <p>operating temperature range</p> <p>od -10°C do +55°C*</p> <p><small>*optional others</small></p> |  | <p>static load capacity</p> <p>2500 kg</p> |
|  | <p>quantity on a EURO pallet of height 2,4 m</p> <p>40 pcs.</p> |  | <p>dynamic load capacity</p> <p>400 kg (PULA-1210-BK-400)</p> <p>600 kg (PULA-1210-BK-600)</p> |
|  | <p>number of pallets on a TIR truck</p> <p>33 pcs.</p> <p>total quantity on the TIR truck</p> <p>1320pcs.</p> |  | <p>capacity on the rack</p> <p>-</p> |

PRODUCT DIMENSIONS



To order the above product, please enter the following on the order form:

- **product index with specific load capacity**
- **the colour to be ordered**

e.g.: PULA-1210-B-400 black and load capacity 400 kg
 PULA-1210-X-400 instead of X an indication of a colour other than black
 (BL-blue; GR-green; Y-yellow e.t.c)

